

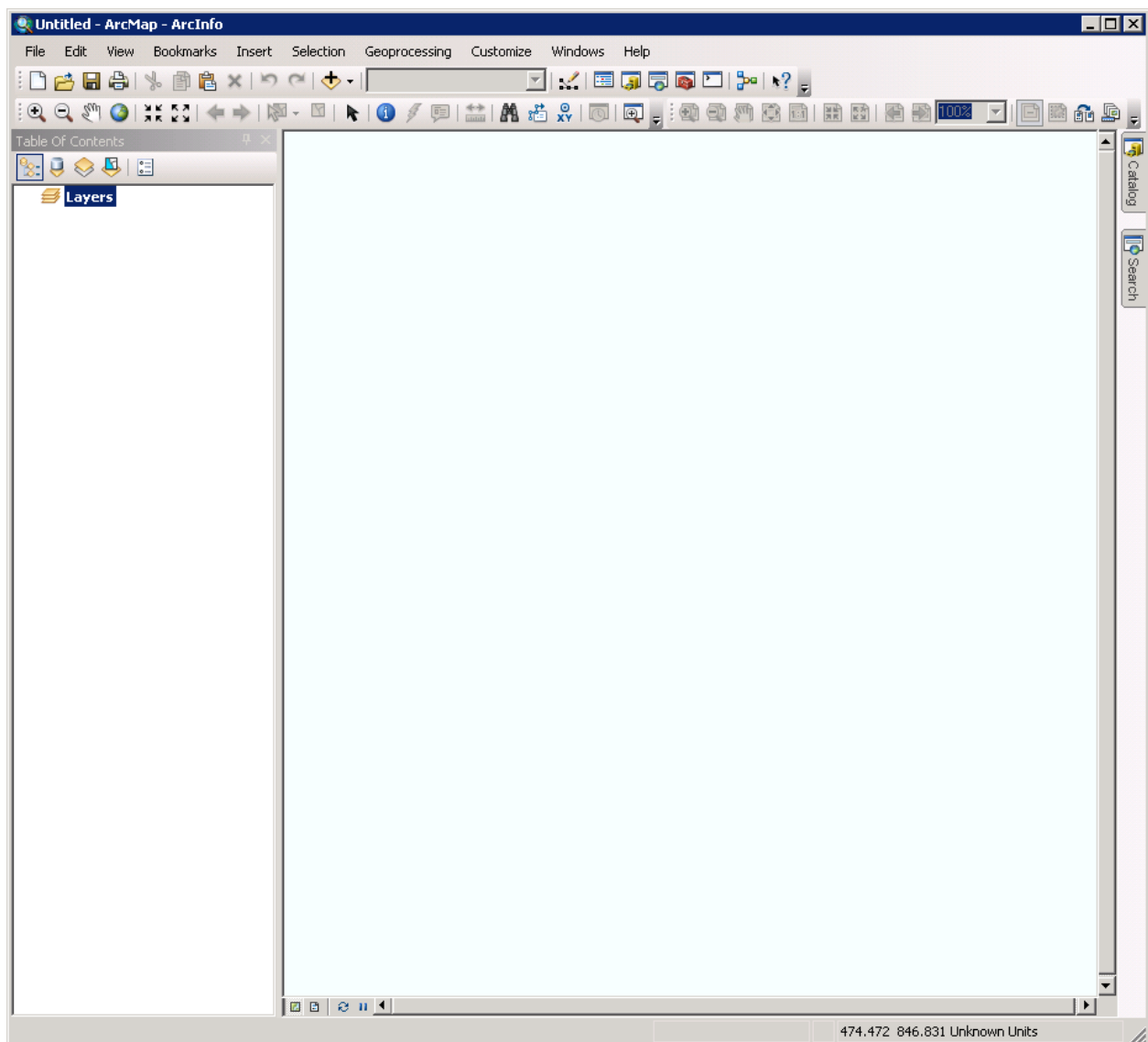
# Connect Using ArcMap

*Last Updated: 7/18/2011*

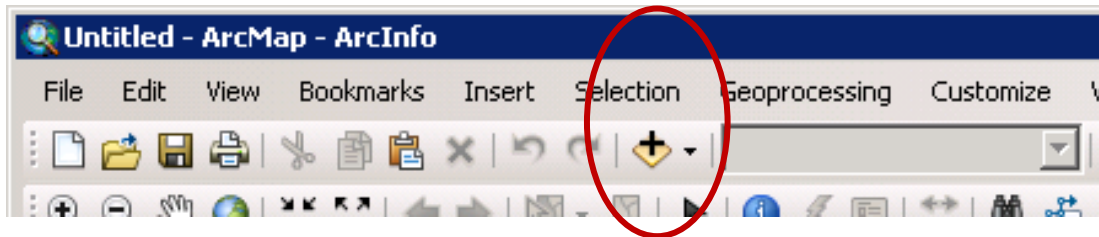
This document provides step by step instructions on how to use ArcMap to connect to our map services. Note: this document uses ArcMap version 10 with Service Pack 2.

There are many different ways to add a map service from an ArcGIS Server to ArcMap. Here we are going to show you one way. This assumes that you have already connected to our map service with ArcCatalog. If you need help with ArcCatalog, see our help document, "Connect Using ArcCatalog" that can be found at <http://atlas.resources.ca.gov/>.

**Step 1.** Once you opened ArcMap, you should see a blank map with toolbars at the top of the map.

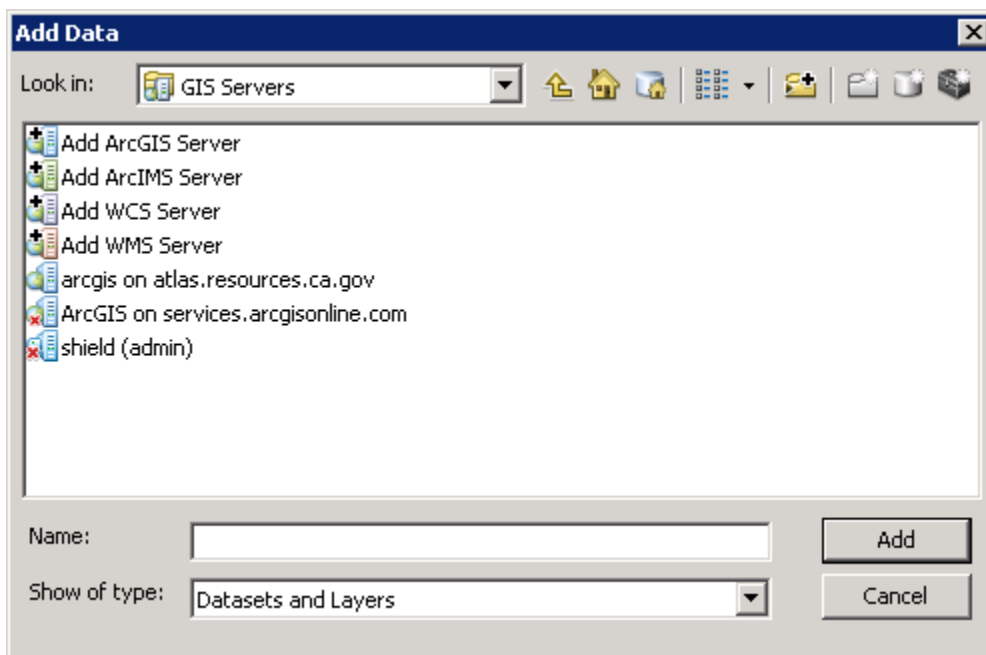


**Step 2.** Click on the “Add Data” button (it has the tipped square with a black plus sign).



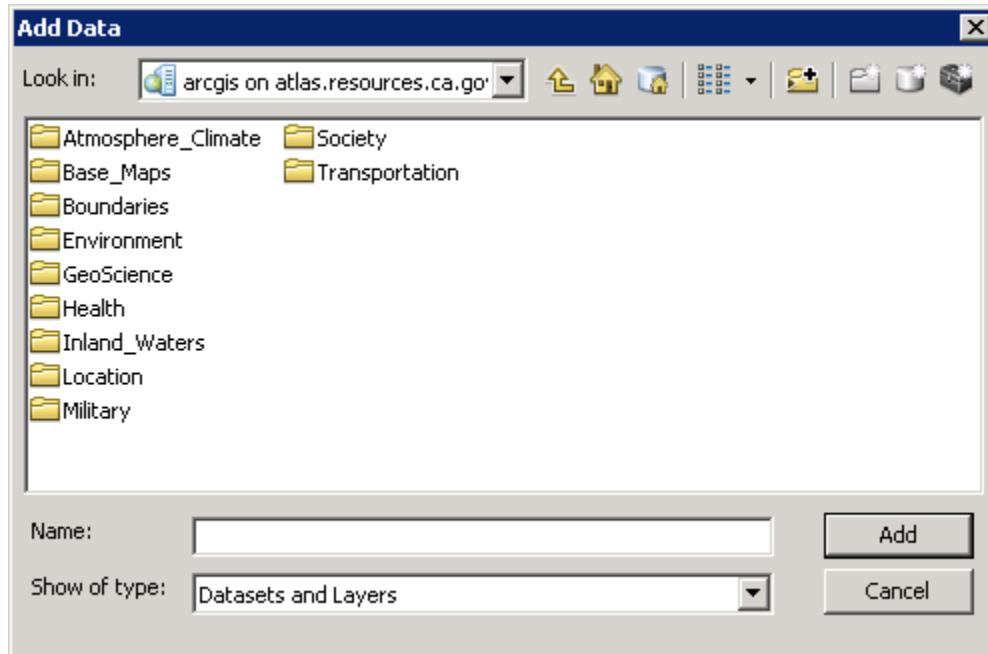
If you do not see this button or tool bar, it may mean that the “Standard” toolbar is not being displayed. To show it, **right click** on ArcMap’s toolbar area and make sure the “Standard” toolbar is checked on.

**Step 3.** After clicking on the plus icon the “Add Data” dialog box opens. If you successfully connected with ArcCatalog, you will see the connection here. It will be named “[arcgis on atlas.resources.ca.gov](http://arcgis.on.atlas.resources.ca.gov)” (unless you renamed it to something else). Double click on this connection.

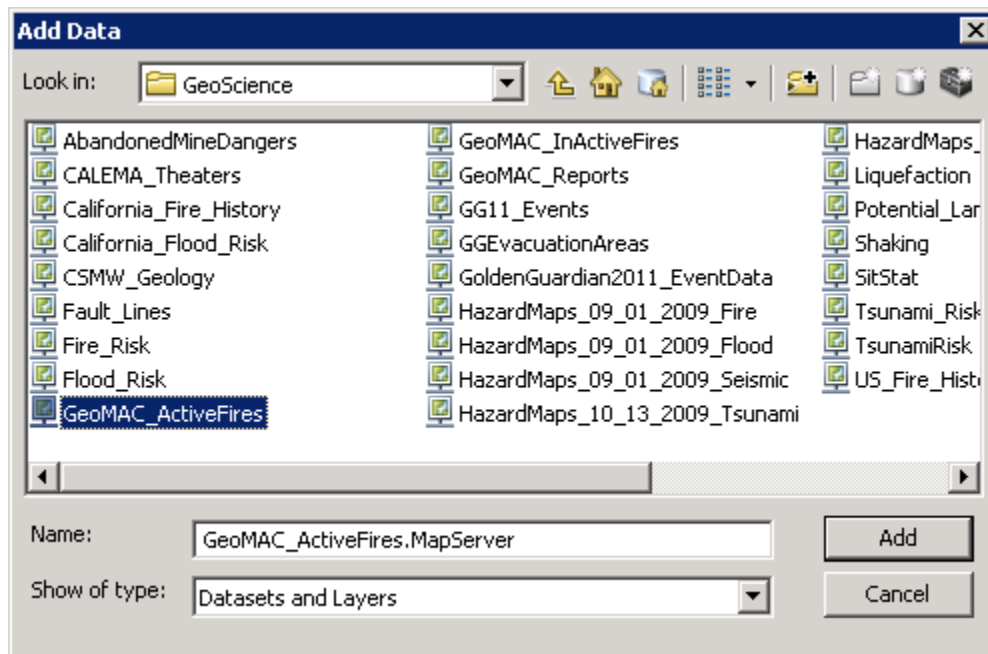


Continued...

**Step 4.** You will see a series of folders listed. Because we have a high number of map services, we group them into folders that take their names from ISO metadata themes. Double click on a folder to open it.



**Step 5.** Select a map service, then choose “Add.”



Continued...

You have not just added a map service!

