

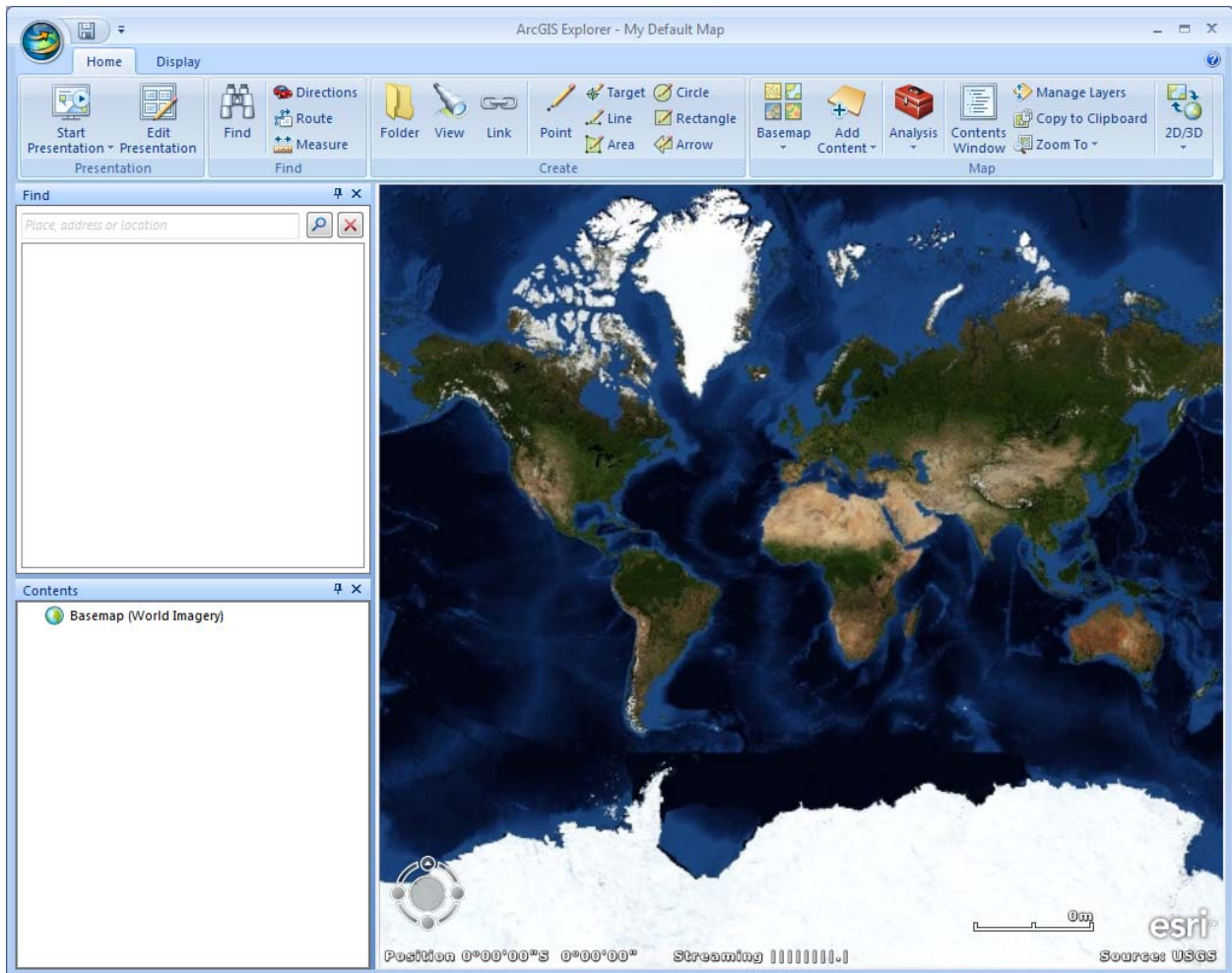
Connect Using ArcGIS Explorer

Last Updated: 7/18/2011

This document provides step by step instructions on how to use ArcGIS Explorer to connect to our map services. Note: this document uses ArcGIS Explorer version 10 with Service Pack 2.

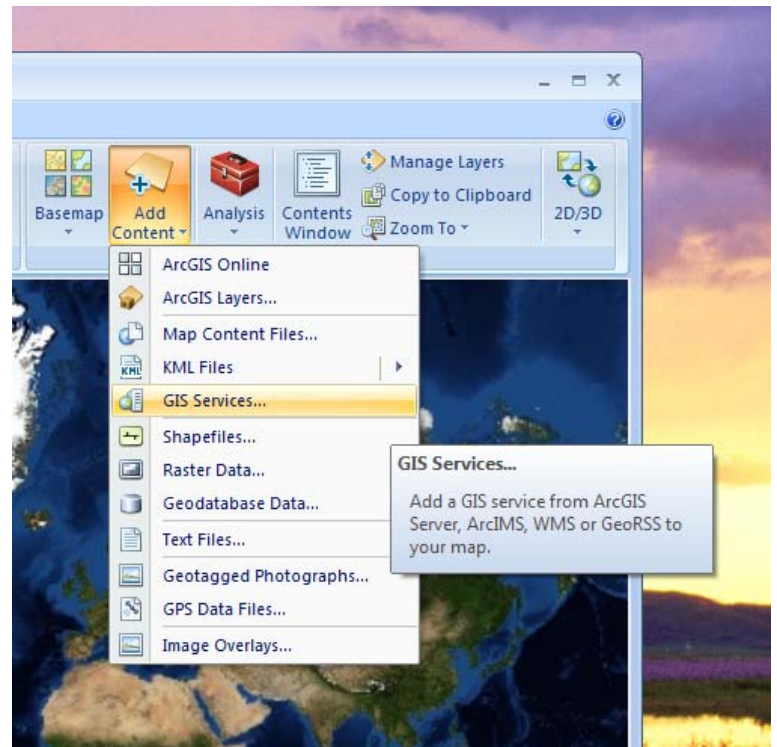
There are many different ways to add a map service from an ArcGIS Server to ArcGIS Explorer. Here we are going to show you one way. This assumes that you have already downloaded and installed ArcGIS Explorer. You can download this free software from a link on <http://atlas.resources.ca.gov/>.

Step 1. After opening ArcGIS Explorer, click on the “Add Content” button on the main menu.



Continued...

Step 2. ArcGIS Explorer then shows you a list of data types, and data sources that you can display on your map. Choose “GIS Services.”

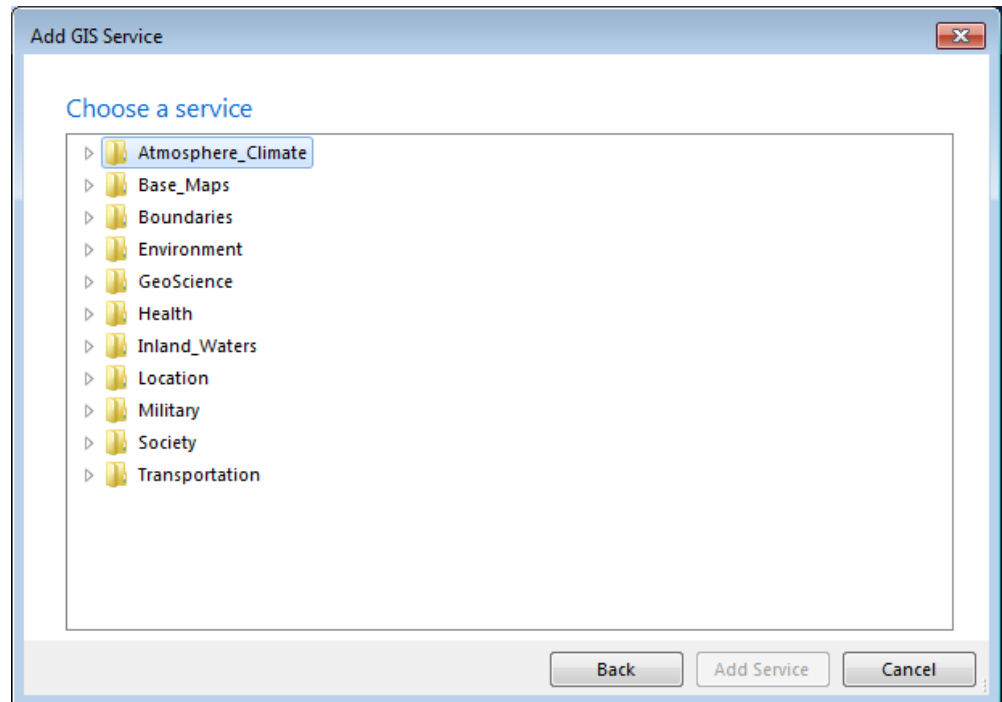


Step 3. If you have not yet added a connection in ArcGIS Explorer to a GIS Server, you will see the “Add GIS Service” dialog box appear. Complete the dialog as shown below then click “Next.”

A screenshot of the 'Add GIS Service' dialog box. The title bar reads 'Add GIS Service'. The main heading is 'Specify server connection information'. Below this, it says 'Choose the type of server and specify the URL that uniquely identifies the server on the internet.' The 'Server type' dropdown menu is set to 'ArcGIS Server'. The 'Server' text box contains the URL 'http://atlas.resources.ca.gov/arcgis/services'. Below this, an example URL is provided: 'Example: http://www.server.com/ArcGIS/Services'. There is an 'Account (optional)' section with 'User name:' and 'Password:' text boxes, and a checkbox for 'Save user name and password'. At the bottom left, there is a help icon and a link: 'About connecting to GIS Servers'. At the bottom right, there are three buttons: 'Back', 'Next', and 'Cancel'.

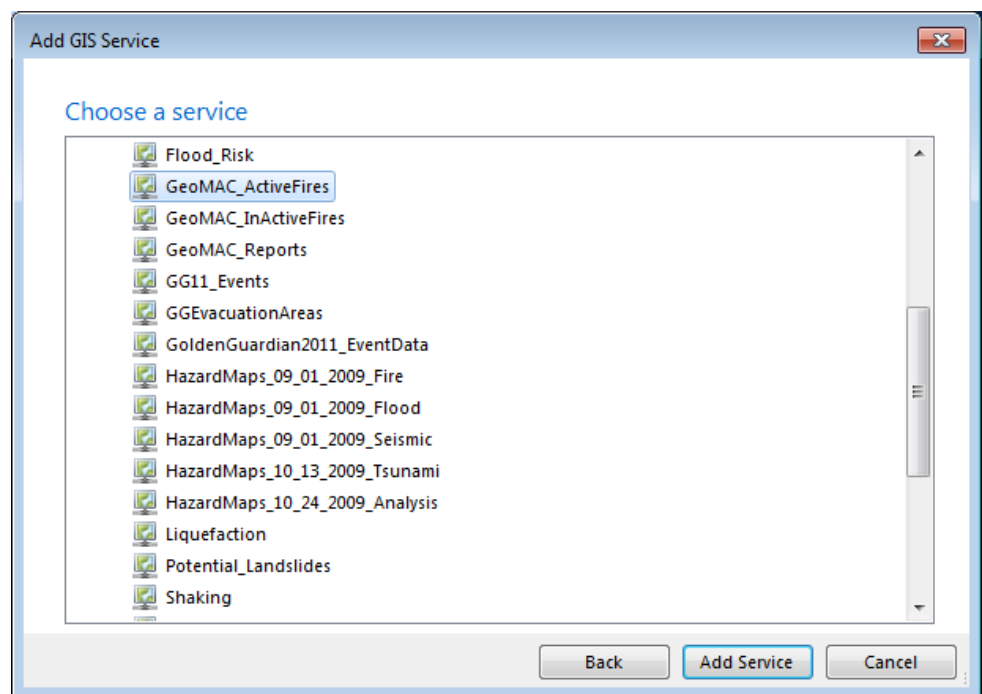
Continued...

Step 4. After connecting to our map server, you will see a list of folder. Each folder is named after an ISO metadata theme category, and each folder has a list of map services. To see the map services inside a folder, click on the tipped triangle on the left side of a folder icon.



Step 5. After opening a folder, select a map then click "Add Service."

TIP! You can select more than one map service at a time by holding the SHIFT or ALT keys down while selecting map services with your mouse.



Continued...

You have just added a map service to ArcGIS Explorer!

