

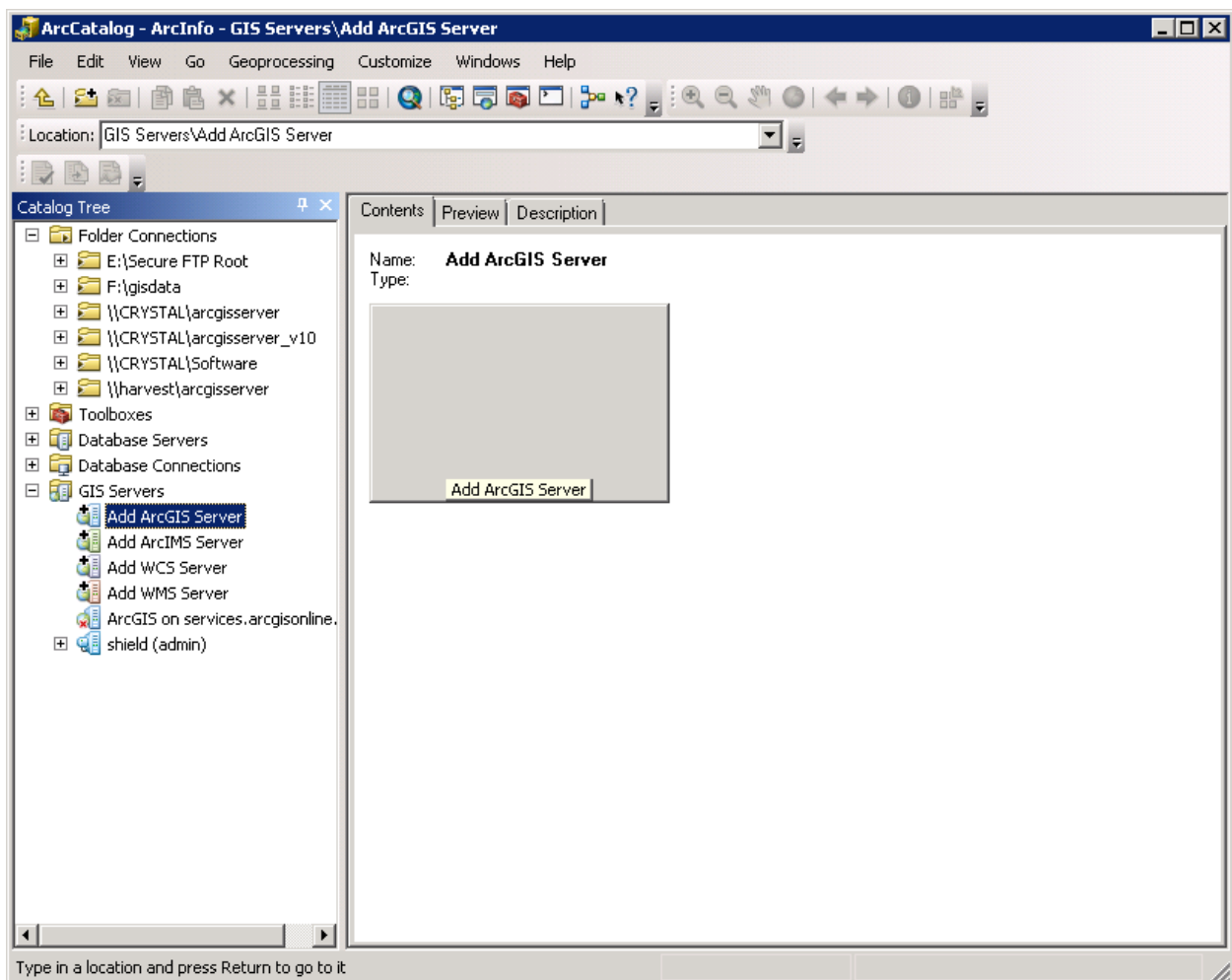
# Connect Using ArcCatalog

*Last Updated: 7/18/2011*

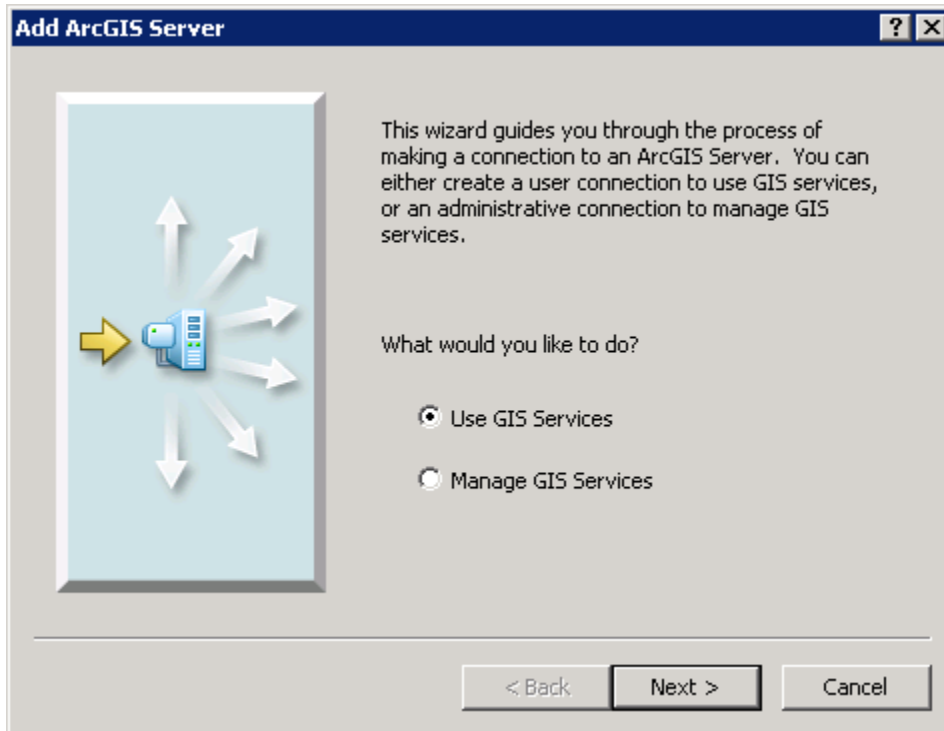
This document provides step by step instructions on how to use ArcCatalog to connect to our map services. Note: this document uses ArcCatalog version 10 with Service Pack 2.

**Step 1.** After opening ArcCatalog, expand the node where it says “GIS Servers.” You should see at a minimum “Add ArcGIS Server,” “Add ArcIMS Server,” “Add WCS Server,” and “Add WMS Server.”

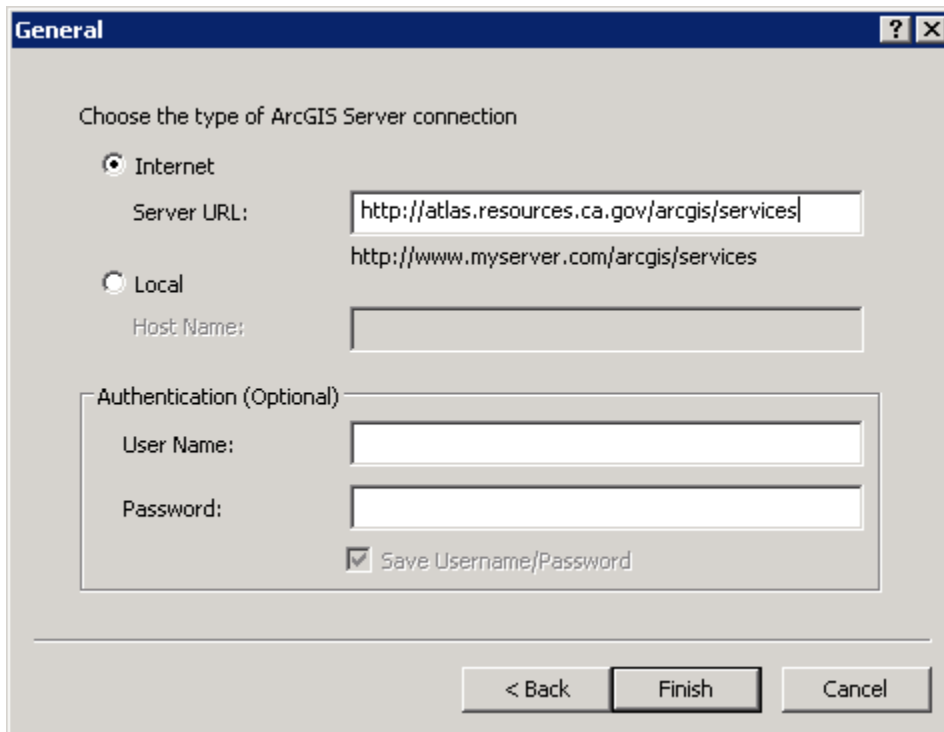
Double click on “Add ArcGIS Server.”



**Step 2.** A dialog box opens called “Add ArcGIS Server.” On the initial screen choose “Use GIS Services,” then click the “Next” button.



**Step 3.** The next dialog box opens. Complete the dialog box as shown below then click “Finish.”



You are now connected!

In ArcCatalog you should see a new listing under “GIS Servers” for our map server, and, you should be able to expand that listing to reveal folders and services.

